

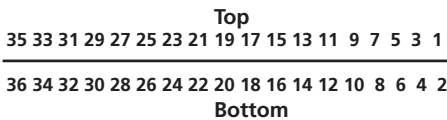
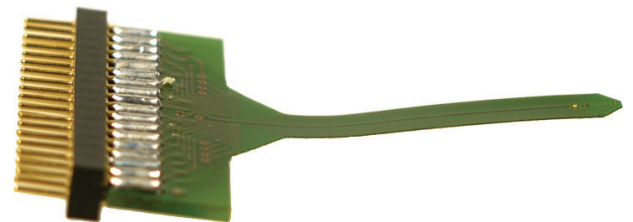
EcoFlexMEA24

Flexible Microelectrode Array with 24 electrodes for Use with 32-Channel Miniature Preamplifier MPA32I for *in vivo* or *in vitro* Applications.

Layout

Cleaning

Rinse with distilled water, optional with ethanol 70 %. EcoFlexMEAs made from Polyimide (Kapton) are heat stable and autoclavable.



Advantages

- EcoFlexMEAs made of flexible polyimide (Kapton) are perfect for *in vivo* and specific *in vitro* applications.
- EcoFlexMEAs are very cost efficient and more robust than FlexMEAs from polyimide foil.
- The electrodes and tracks and contact pads are made of pure gold.
- Use an EcoFlexMEA without adapter together with the Miniature Preamplifier MPA32I.

Technical Specifications

Temperature compatibility	0 - 125 °C
Dimensions (W x D x H)	36 mm x 24 mm
Thickness of the electrode field	50 µm
Base material	Polyimide (Kapton)
Weight	< 10 g
Track material and contact pads	Gold (Au)
Electrode diameter	80 µm
Interelectrode distance (center to center)	300 µm
Electrode height	Planar
Electrode material	Gold (Au)
Isolation material	Polyimide (Kapton)
Electrode impedance	< 150 kΩ
Electrode layout grid	10 x 2 + 4
Number of recording electrodes	24
Number of reference electrodes	2 internal reference electrode (iR)
Ground electrodes	2 ground electrodes
Software	
Multi Channel Experimenter	MEA Configuration
MC_Rack	1 dimensional or Configuration
Channel map	EcoFlexMEA24.cmp

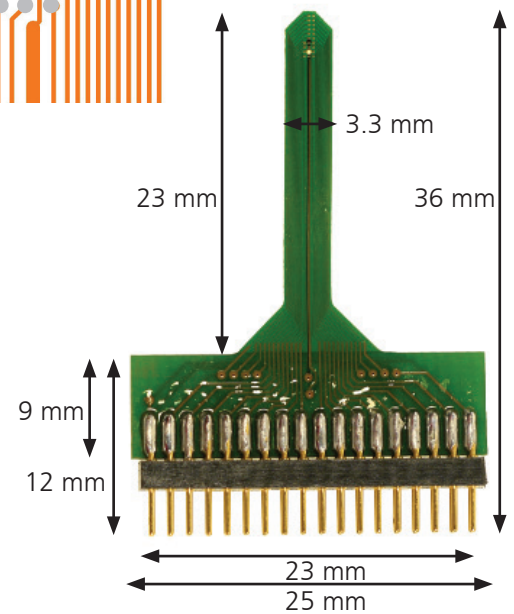
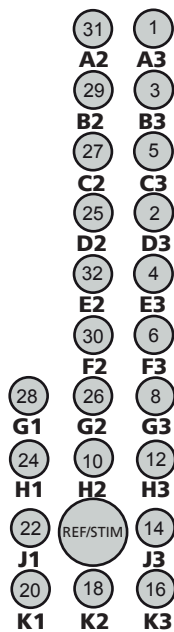
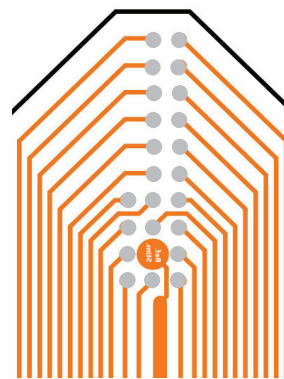
EcoFlexMEA24

Flexible Microelectrode Array with 24 electrodes for Use with 32-Channel Miniature Pre-amplifier MPA32I for *in vivo* or *in vitro* Applications.

Layout

EcoFlexMEA24 OUT / MPA32I IN

Pin	Electrode	Data Acquisition Software Channel Number
1	GND (Top)	
2	Ref / Stim (Bottom)	
3	A3	1
4	D3	2
5	B3	3
6	E3	4
7	C3	5
8	F3	6
9	not connected	7
10	G3	8
11	not connected	9
12	H2	10
13	not connected	11
14	H3	12
15	not connected	13
16	J3	14
17	not connected	15
18	K3	16
19	not connected	17
20	K2	18
21	not connected	19
22	K1	20
23	not connected	21
24	J1	22
25	not connected	23
26	H1	24
27	D2	25
28	G2	26
29	C2	27
30	G1	28
31	B2	29
32	F2	30
33	A2	31
34	E2	32
35	Ref / Stim (Bottom)	
36	GND (Ground)	



Numbering

The numbers in the electrodes are the recording channel numbers that refer to the channel numbers of the data acquisition program. Please make sure that you have selected "Configuration" in MC_Rack in the "Channel Layout" under "Data Source Setup"



Warning: The device may only be used together with the MPA32I from Multi Channel Systems MCS GmbH, and only for the specified purpose. Damage of the device and even injuries can result from improper use.